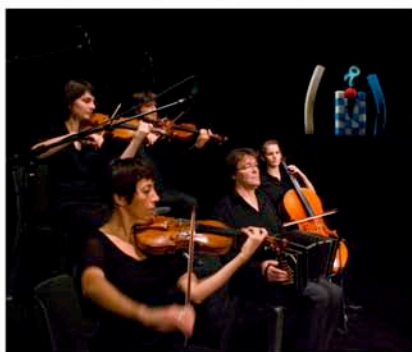


BALLE ROUGE



LA BALLE ROUGE & QUATUOR



Technical Rider



Ce contrat fait partie de la conception du spectacle, aucune modification ne peut être décidée par l'entreprise utilisatrice sans l'accord du représentant de l'entreprise prestataire. Établi conformément au code du travail : art. R237-1 à R237-28.

This technical rider is part of the contract between Balle Rouge Production and the organisation buying the show. No modification possible without the agreement of Balle Rouge Production.

Company / Show

Company : Balle Rouge
www.spectaclelaballerouge.com

Name of the show : La Balle Rouge & Quatuor
<https://www.youtube.com/watch?v=IxCxrgeCzDo>

Duration : 55 minutes.

Type : Animated Objects, musical show for all the family since 5 years old.
Musicians on stage : 5 persons (1 bandoneon, 2 violins, 1 alto, 1 cello)

Difficulties : Muppets manipulators are on stage and must be in the dark, be carefull to the parasiting lights. Theatre absolutely dark ! (be carefull that the emergency exit light do not light the stage)
We throw a big red ballon in the audience (2,50 meters)

Contacts

Company :

06 51147511 contact@ballerouge.com

Technicians :

Julien JAUNET : +33 6 99 15 36 37 jujujaunet@yahoo.fr

Benoît LEPAGE : +33 6 81 42 45 96 superbenouite@gmail.com

Ivan Coulon : +33 6 81612978 ivan.coulon@wanadoo.fr

Team

2 muppets manipulators
1 bandoneonist
2 violonists
1 altist
1 cellist
1 technician (sound / lights / stage)

Stage

- Stage :

Black ground with no reflections of light (marley/black dance floor).

Correct size : 12 m (wall to wall) X 10 m (depth) X 6 m (height)

Minimum size : 9 m (wall to wall) X 6 m (depth) X 4 m (height)

- Curtains :

2, 50 m from the back wall of the stage, a large black curtain with an entrance in the middle. We put a big red ball behind, which preferably appears from the middle.

Side curtains (legs, black velvet) about 4m from the front of stage and opening 8m of stage.

Side curtains (legs, black velvet) about 5,50m from the front of stage and opening 5m of stage.

- The BIG red ball :

At the end of the show, the comedian throw a big red ball (2,50 m) made of tissue into the audience. Be sure that everything is well fixed and securised and can not fall in the audience at the contact of this ball.

- Equipment :

We have 2 tables (2m X 0,60m X 1m each) in the center of the stage for the muppets, a red ball 1m, a big red ball (2,50m)

- Around the stage :

Stage left, right and back must be in a perfect dark, without no light pollution.

- Public entrance :

Ask our technician before opening the théâtre to the public.

- Other :

We use a pulley and a long wire to pull out the rolling tables, so we just need an heavy load (15 to 25 kg) on stage left to fix the pulley.

Dressing rooms

- Minimum :

. 1 Dressing room for 3 women

. 1 Dressing room for 4 men

. Catering for 8 persons with coffee, tea, water, fruits or / and cakes...

Sound

(In several cases, « unplugged » possible. Contact us)

- **Diffusion** : (we don't need a system too loud)
 - Clusted stéréo system (*L-Acoustic MTD115, Amadeus MPB 600...*), with EQ
 - Delayed 2nd clusted sytem if necessary.

- **Monitors** : 3 wedges (*L-Acoustic MTD108, Amadeus CX12 or MPB 200, Nexo PS10...*), with EQ (2 wedges for stage left Aux 1 / 2, and 1 wedge for stage right Aux 3).

- **Mics** :
 - 4 statics cardio for strings (*Neumann KM184, AKG 451, Shoeps...*)
 - 2 statics cardio for Bandoneon (*Neumann KM184, AKG 535...*)

- **Desk** :
 - Digital Mixer (*Yamaha 01V, 02R, LS9...*)
 - OR
 - Analog Mixer (*Midas, Soundcraft...*) – 12 in, 3 aux pre, 1 aux post
 - Reverb « hall » (*M-One, PCM70, SPX1000...*)
 - 5 x EQs 31 bands (front of house and wedges)

- **Other** :
 - 3 tall boom mic stands (black)
 - 3 mid boom mic stands (black)



- 3 chairs (black)
- 2 bar stools (high chairs) (black)



Lighting

- Notes :

Theatre lighting is required. A pre-installation is essential before the company arrival. Pay attention to the precise locations of the Profiles 614sx !
Company bring Top Hat to be installed on the profiles (fixed in the place of gels). If you don't have Robert Juliat 613sx Profiles, please contact us (one of the technicians) because top hats are deigned for the size of the robert juliat's gels.
Audience light must be controlled on the lighting desk

- Plan :

Scale of the attached plan : 1/75

This plan of lights can be adapted to your stage and your equipment contact us

- Equipment required :

Qty	Equipment
10 6 2 5	PC 1kW PC 1kW on Square Base PC 2kW F1
7 7	Profiles Robert Juliat 614SX Profiles 1kW 15°-42°
7 12	PAR CP 62 on Square Base PAR CP 62
1	Lighting desk with Sub-Masters (Avab...)
42	dimmer 2 KW
1 13	Black aluminium tape Square Bases

Theater team / Installation / Show / Uninstallation

The stage must be ready to focus before the arrival of the company (Lights hunged, curtains installed, sound prepared).

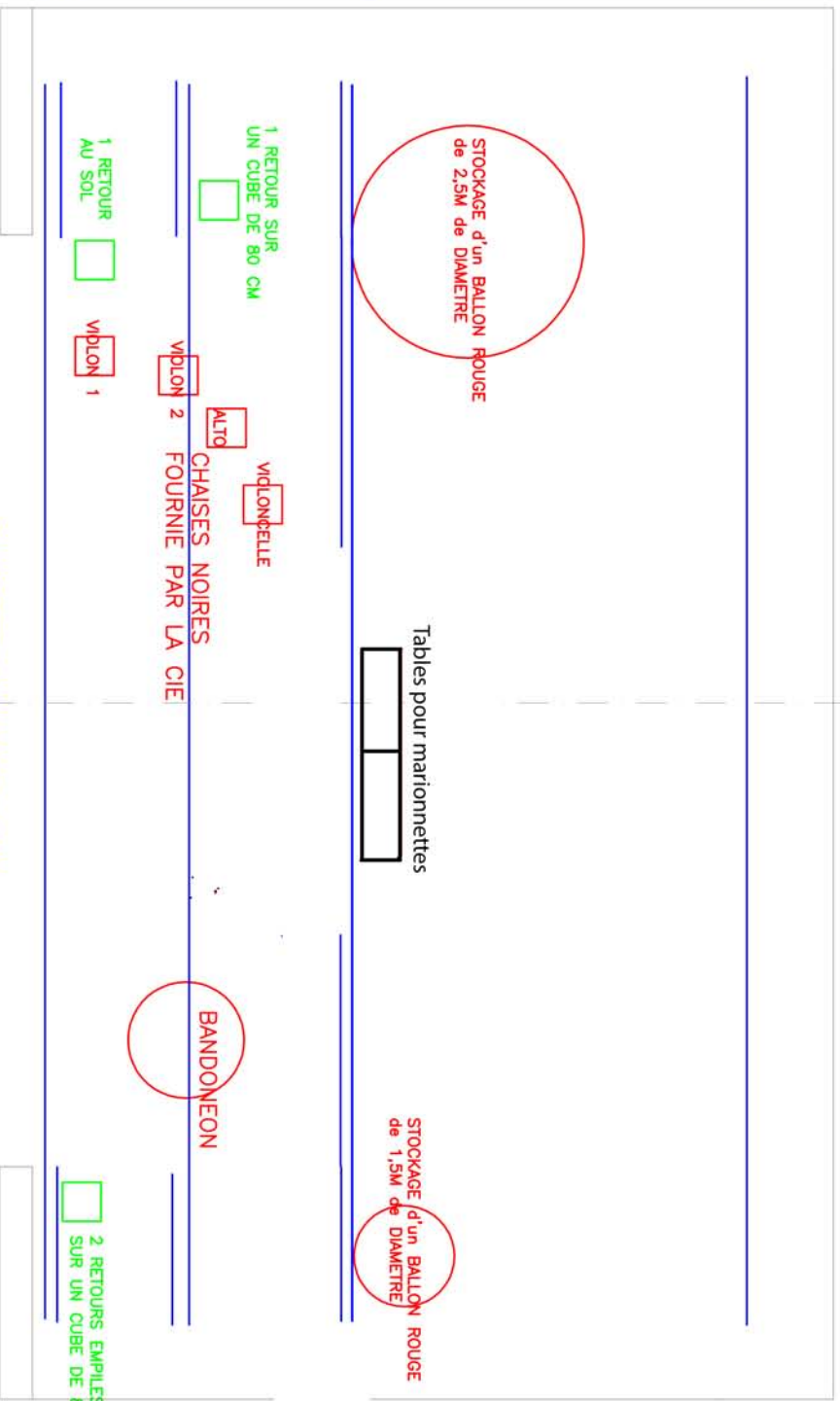
Time	Work	Persons required
8:00 AM to 12:00	Arrival of our technician, Installation of the muppet stand, Focus lights	2 Light technicians 1 Stage technician
2:00 PM to 6:00 PM	End of Focus lights, Sound installation, Sound check with musicians (1 hour max), Clean stage	2 Light technicians 1 Sound technician 1 Stage technician
SHOW	Duration : 1 hour max	1 Sound technician 1 Light assistant
After the Show	Uninstallation muppet stand and shutters on profiles (1 hour)	1 Stage technician 1 Light technician

RIDEAUX DE FOND DE SCENE

3ème PLAN de PENDRILLON
POUR CASTELETT
FRISE 3 POUR CASTELETT

2ème PLAN de PENDRILLON
FRISE 2

1er PLAN de PENDRILLON
ou Rideau d Avant Scene
FRISE 1



SPECTACLE BALLE ROUGE ET QUATUOR

CIE BALLE ROUGE

PLAN DE SCENE TYPE

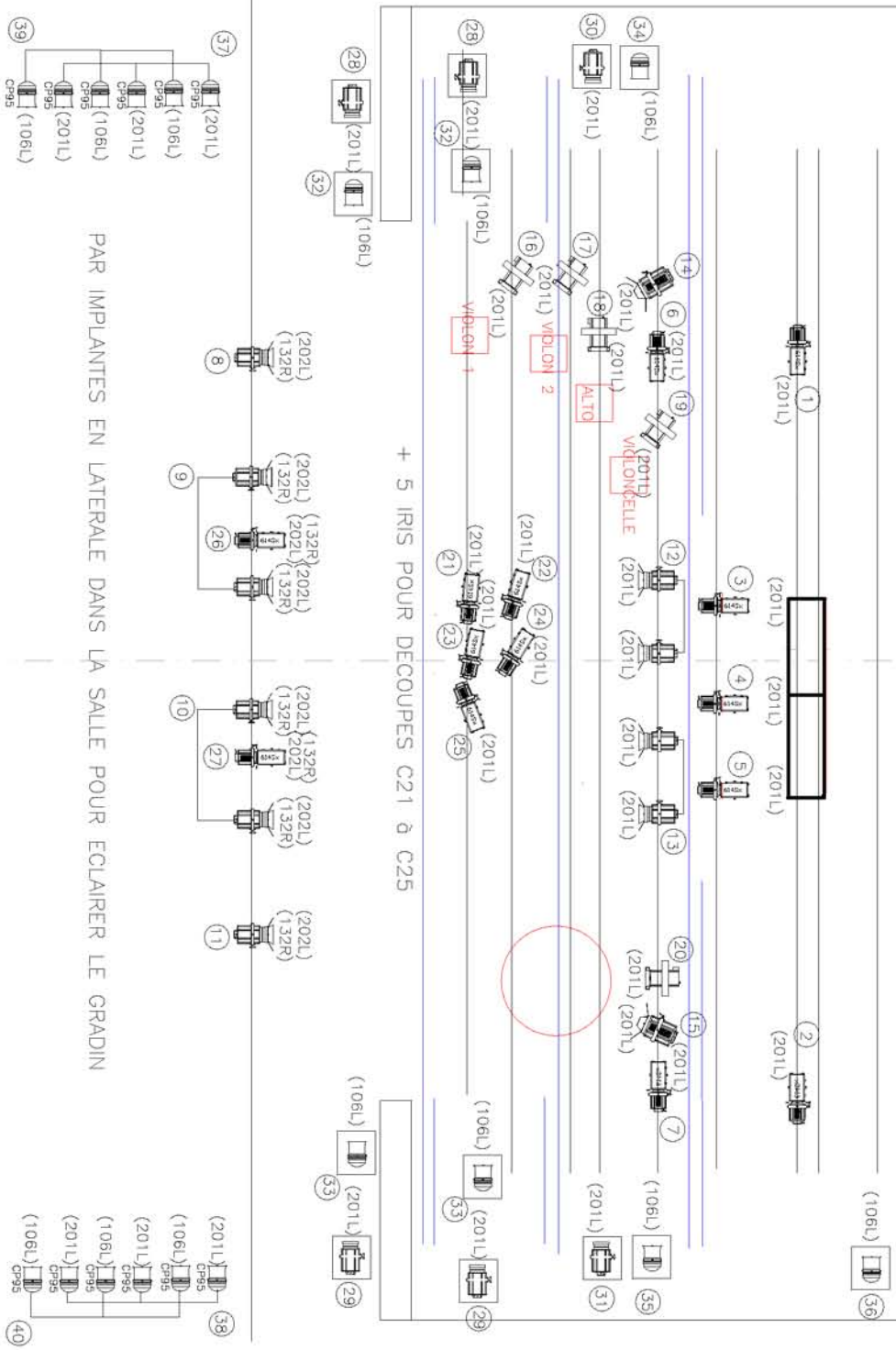
Contact: Julien JAUNET

Tél: 06.99.15.36.37

NOV 10 ECHELLE 1/100

jaunetjulien@hotmail.fr

DIRECT 16A AU LOINTAIN
POUR CONFLEUR DE BALLE



PAR IMPLANTES EN LATERALE DANS LA SALLE POUR ECLAIRER LE GRADIN

+ 5 IRIS POUR DECOUPES C21 à C25

10 PC 1KW

7 DECOUPES 614SX C1 à C7

Les Découpes de 1 à 7 sont équipées de cônes antiatits fournis par la Cie

12 PAR THOMAS CP62

2 PC 2KW avec VOILETS

(202L) NUM.GELATINES

6 PC1KW sur Platines

7 DECOUPES 614S

7 PAR THOMAS CP62 sur Platines

5 F1 (PAR 36)

NUM.CIRCUITS

SPECTACLE BALLE ROUGE ET QUATUOR

CIE BALLE ROUGE / PLAN DE FEU TYPE

Contact: Julien JAUNET
NOV 10 ECHELLE 1/100
jaunetjulien@hotmail.fr

Tél:06.99.15.36.37