

TECHNICAL RIDER

SHOW L'ENFANT ROI (Child King) / BALLE ROUGE

Version 4 / Sept 2012

Compagny / Show

Compagny : Balle Rouge 11 rue de Beaupré 37250 Veigné FRANCE
contact@ballerouge.com www.ballerouge.com

Name of the show : L' Enfant Roi (Child King)

Duration : 0H45 without Intermission.

Type : Animated Objects, musical show for all the family since 5 years old.

Difficulties : Muppets manipulators are on stage and must be in the dark, be careful to the parasiting lights. Theatre absolutely dark! (be careful that the emergency exit light do not light the stage)

Contacts

Compagny :

Maryline Calas +33 6 75 92 20 57 / +33 2 47 48 97 45 contact@ballerouge.com

Technicians :

Julien Jaunet : +33 6 99 15 36 37 jaunetjulien@hotmail.fr

Benoît Lepage : +33 6 81 42 45 96 superbenouite@gmail.com

Ivan Coulon : +33 6 81 61 29 78 ivan.coulon@live.fr

Team

2 puppeters, 1 bandoneonist, 2 violonists, 1 altist, 1 cellist
1 technician (light / stage)

Stage

Stage : The floor must be black (black dance floor or black wood)

Correct size : 14m (wall to wall) x 10m (depth) x 6m (height)

Minimum size : 10m (wall to wall) x 7m (depth) x 4m (height)

Curtains :

The stage is dressed by Black leg and border setting and one Back drop (Back wall)

2 side curtains (LEGS WIDE, black velvet) will be installed at **5m from the front of stage** for muppets manipulators

Behind will be placed **5 Parallel** (or folding rostrum) **height 0.60m** x 2m x 1m with over a **black carpet (5m x 2m)**

The equipment will be placed above

Equipment : We have 2 tables manipulations(0.80m x 0.70m 0.80m each) in the center of the stage for the muppets

Around the stage : Stage left, right and back must be in a perfect dark, without no light pollution.

Public entrance : Ask our technician before opening the theatre to the public

Dressing rooms

-Minimum :

- 1 Dressing room for 3 women
- 1 Dressing room for 4 men
- Catering for 8 persons with coffee, tea, water, fruits and cakes

Sound

In several cases « unplugged » possible. Contact us

Diffusion :(we don't need a system too loud)

Clusted stéréo system (*Christian heil 115 , Amadeus MPB 600*) with EQ adapted for auditorium

Monitors :

3 wedges (*Christian Heil 112, Amadeus CX12, Nexo PS15...*) with EQ (1 wedge for stage left Aux 1 , and 2 wedges for stage right Aux 2/3)

Desk :

Digital Mixer (yamaha 01V, 02R, LS9...) or Analog Mixer (midas Soundcraft...)
12 in, 3 aux pre, 1 aux post
Reverb « hall » (M-One, PCM70, SPX1000...)
5 x EQs 31 bands (front of house and wedges)

Mikes :

4 statics cardio for strings (Neumann KM184, AKG451, Shoeps...)
2 statics cardio for bandoneon (Neumann KM 184, AKG 535....)

Other:

3 tall mikes stands (black)
3 small mikes stands (black)
3 chairs black
2 bar stools black (high chairs)

Lighting

Notes : Theatre lighting is required. A pre-installation is essential before the company arrival

Pay attention to the precise locations of the Profiles 614sx

Compagny bring Top Hat to be installed on the profiles (fixes in the place of gels).

If you don't have Robert Juliat 614sx Profiles, please contact us (one of the technicians) because Top Hat are designed for the size of the Robert Julia's gels.

Audience light must be controlled on the lighting desk.

Plan :Scale of the attached plan: 1/100

This light plot can be adapted to your stage and your equipment.

Equipment required :

6 PC 1 KW

5 Profiles Robert Juliat 614 SX

5 Profiles 1KW 13°- 42° + 5 Iris

1 Profiles 1KW 28° - 54° + 1 floor stand

5 PAR 36 (F1) 30W

19 dimmer 2KW + 1 dimmer 2KW for Audience light

1 Lighting desk with sub-masters (avab.....)

1 black aluminium tape

Gels List : (6 x 201 Lee Filter , 5 x 202 Lee Filter format profile 1KW) ; (6x 203 Lee Filter, 6x 132 Rosco format PC 1KW) ; (5 x 201 Lee Filter format F1)

Theater team / Installation / Show / Uninstallation

The stage must be ready to focus before the arrival of the compagny (light plot installed, curtains installed, sound prepared)

| Time | Work | Persons required |
|-----------------------------|--|---|
| 8 :00 AM To 12 :00 AM | Arrived from company technician Installation of the muppets stand, Focus light | 2 light technicians 1 stage technician |
| 2 :00 PM To 6 :00 PM | End of Focus lights, Sound installation, Soundcheck with musicians (1 hours max) Soundcheck made by the theater technician Clean stage | 2 light technicians 1 stage technician 1 sound technician |
| 8 :00 PM SHOW | Duration 0H45 | 1 light technician 1 sound technician |
| After the Show | Uninstallation muppet stand and top hat on profiles (1 hours) | 1 light technicians 1 stage technician |

This technical rider is part of the contract between Balle Rouge and the organisation buying the show.

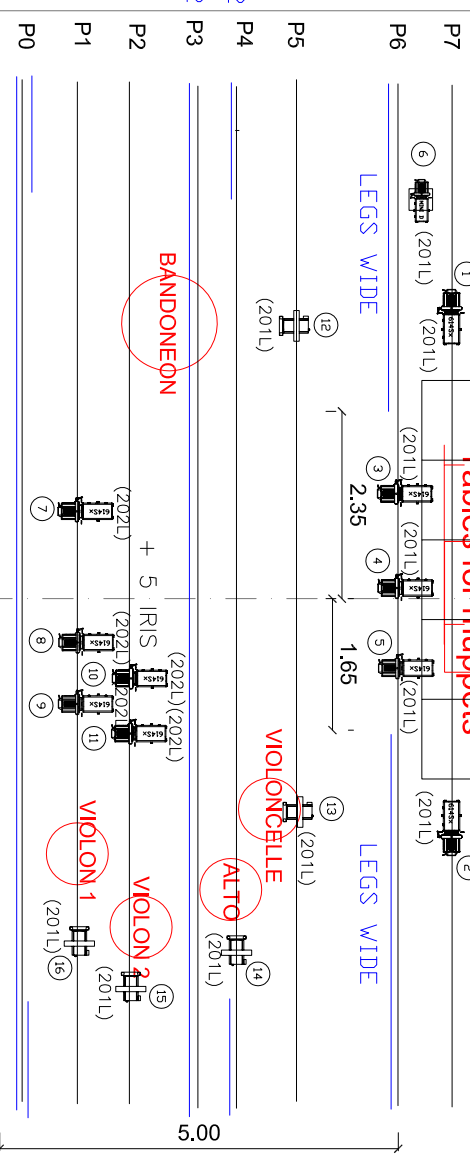
No modification possible without the agreement of Balle Rouge Production

p_8

BACK DROP (BACK WALL)

| | | | |
|--------------------------------------|--|--|--|
| 5 PARALLEL 5M X 2M + BLACK CARPET | | | |
|--------------------------------------|--|--|--|

Tables for muppets



| | LEGS №2 | TEASER №2 |
|----|---------|-----------|
| P4 | | |
| P3 | | |

LEGS N°1

7

8

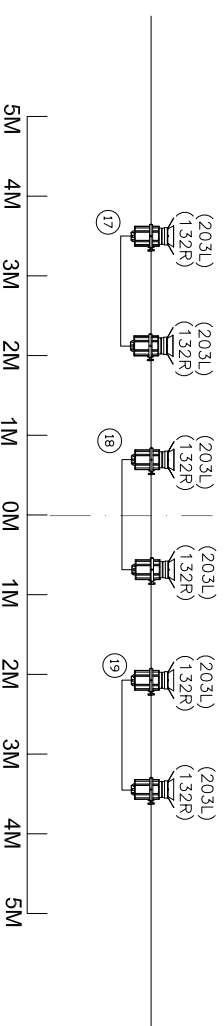
9

(2011) 16

TEASER N°1

PROSCENIUM OPENING 10M

AUDIENCE LIGHT (20)



6 PC 1KW

5 PROFILES ROBERT JULIAT 614SX
WITH TOP HAT (PROVIDED BY THE COMP.
C1 to C5

 5 PROFILES ROBERT JULIAT 614SX + 5 IRIS
C7 to C11

1 PROFILE 1KW 28"-54" on floor stand C6
WITH TOP HAT (PROVIDED BY THE COMPANY)

5 PAR 36 (F1) C12 to C16

CIE BALLE ROUGE PROD SHOW "L'ENFANT ROI"

LIGHT PLOT VERSION 4 SEPT 2012

| | |
|------------------------|-------------------|
| Contact: Julien JAUNET | +33 6 99 15 36 37 |
|------------------------|-------------------|

SEPT 12 scale 1/100

jaunetjuien@hotmail.fr